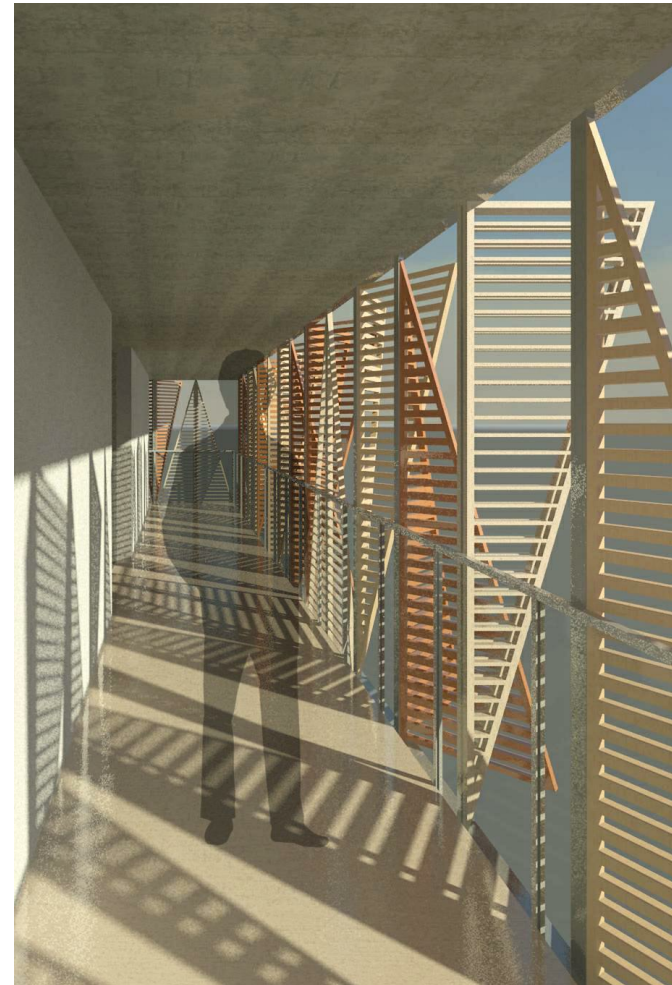




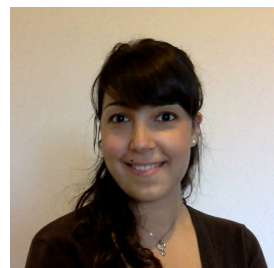
The main characteristic aspect of the project is the facade. This facade is inspired by nature and by butterflies' wings. It consists in a series of three different types of triangular perforated panel which are different in percentage of holes and in the material. These panels also provide the main shading system for the flats inside.

Furthermore, the project is thought as a part of a social housing building. So the users are rather precisely defined and the apartments are thought to supply all their needs in a long period of time. For example, one of the two biggest flats are intended for students but suitable also for a family in the case of the previous users decide to leave the house. In the same way there is a flat, thought for a family with an only child but with a prevision of growing up that needs a space for a little studio. The two smallest apartments are for temporary users such as workers or city visitors ecc..

Moreover, common spaces are fundamentals for gather all these different kind of people together. These spaces are set near the distributional area.



Passage 3D | view intern



Student - Mabel Sorrentino



Facade 3D | view extern