

Seconda Esercitazione

Studente: Eugenio Clementi

“Memorial to the murdered Jews of Europe”, a parametric monument by Peter Eisenman.

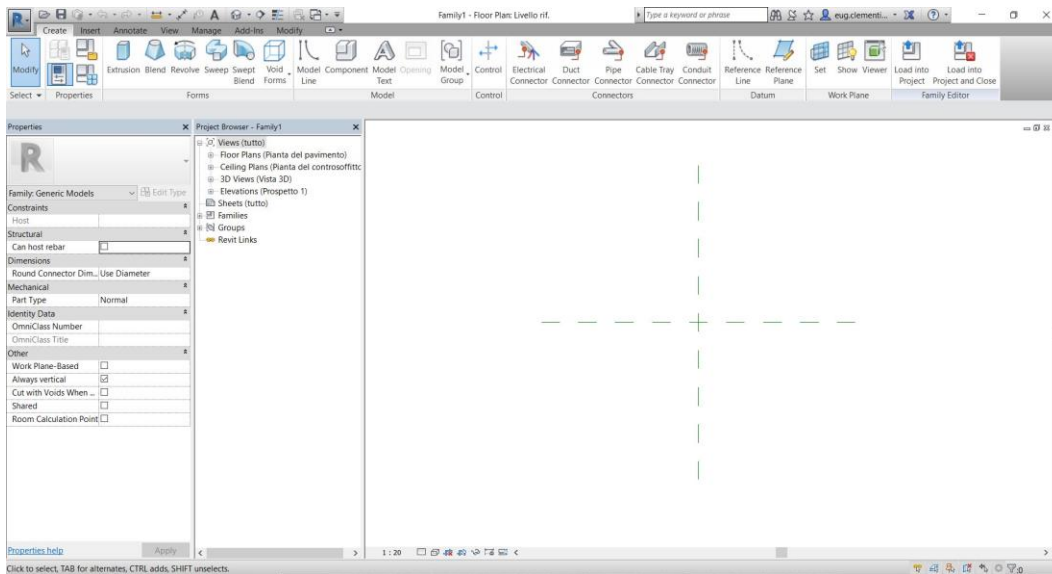


Maybe one of the most famous monument in Berlin, was finished on December 15, 2004. Is made of 2.711 concrete parallelepipeds.

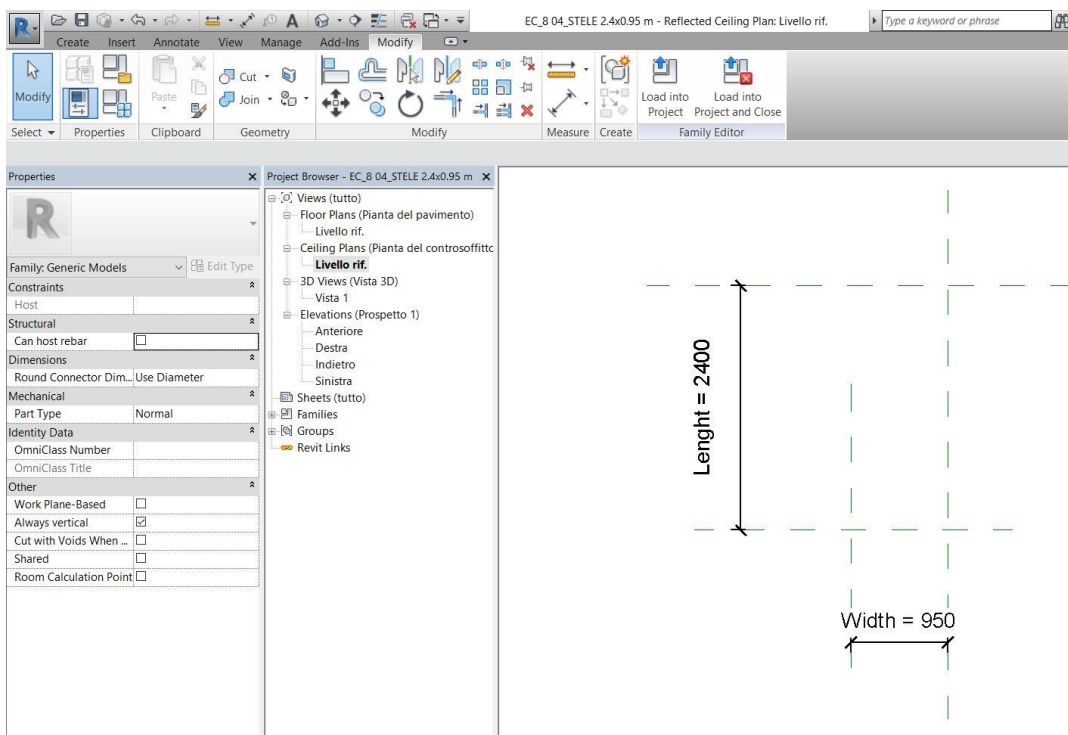
The concrete blocks have different thickness.

1- Open Revit 2017

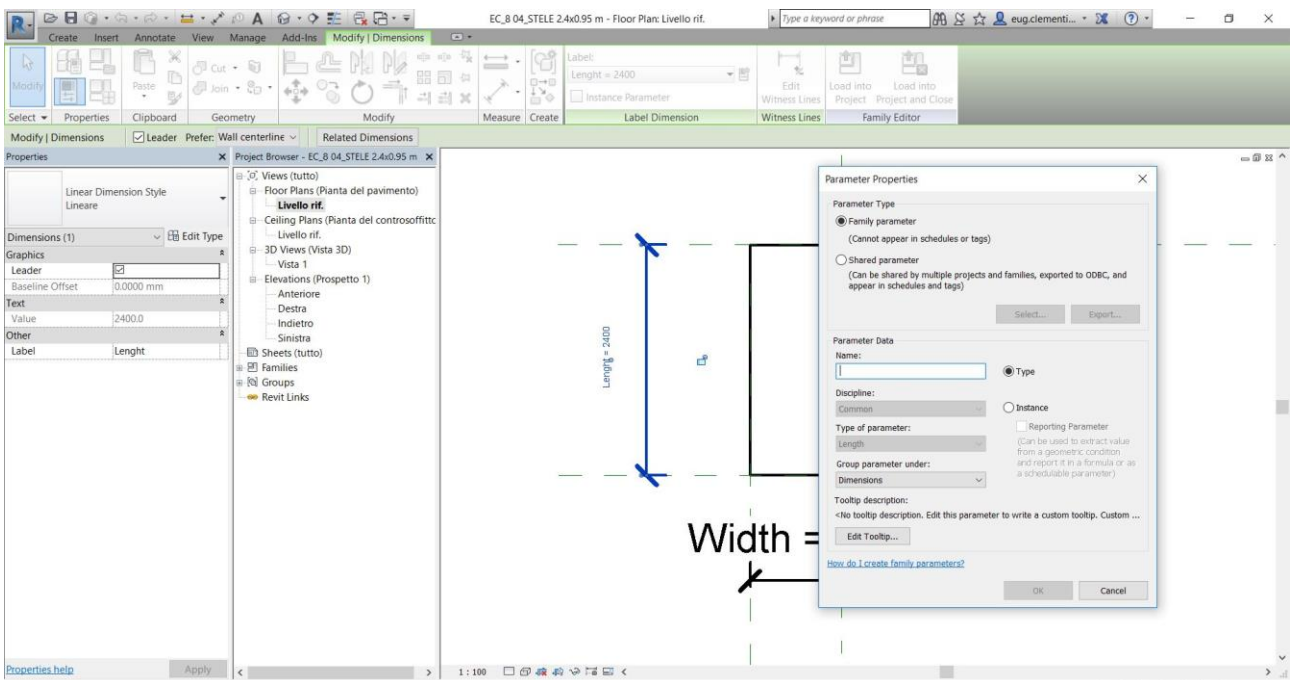
- Families
- New
- Generic Metric Model



- ## 2 - Reference Plane
- Annotate, Aligned

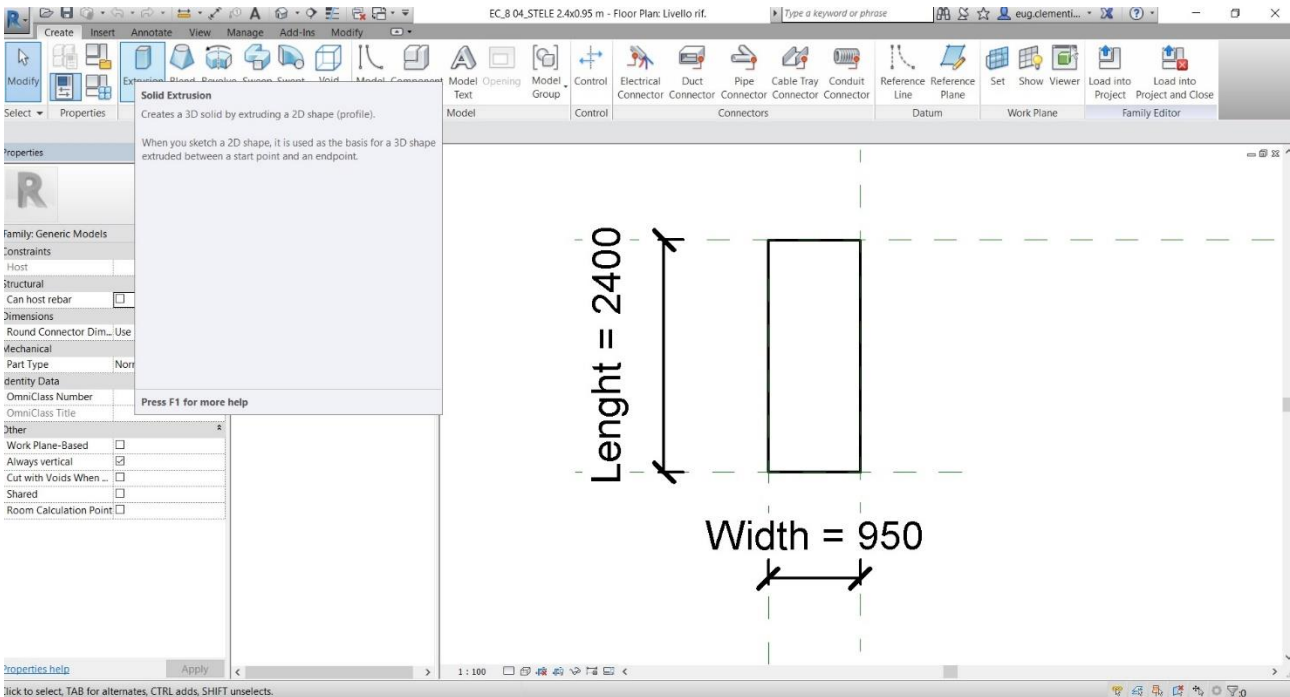


3 - Now we have to create our parameters: Length and Width

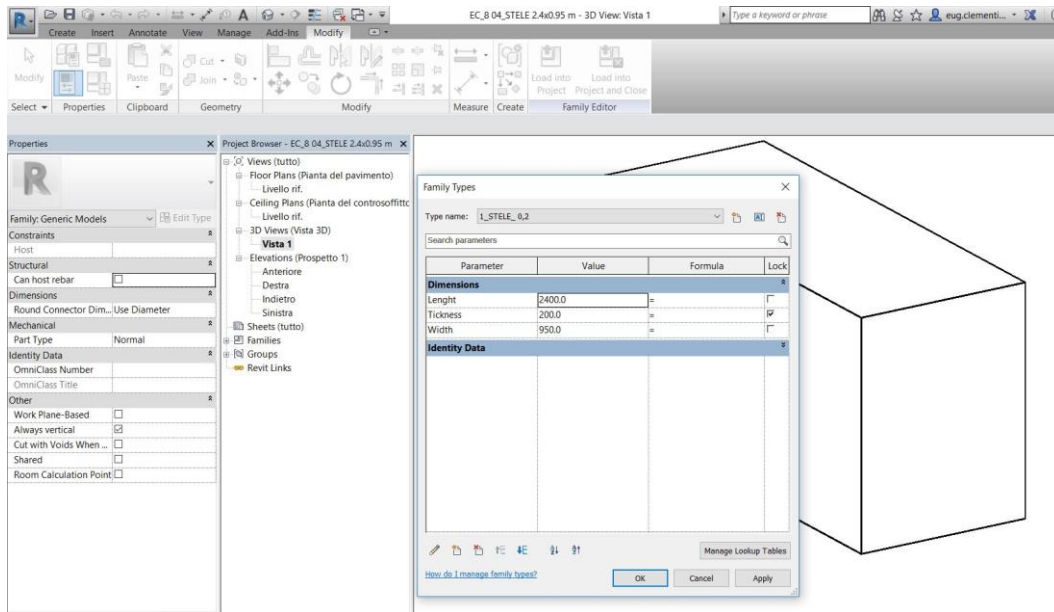


4 - Create

- Extrusion : we have created our parallelepiped in plant.
- In Elevation view we can create our 3 parameter: Thickness.

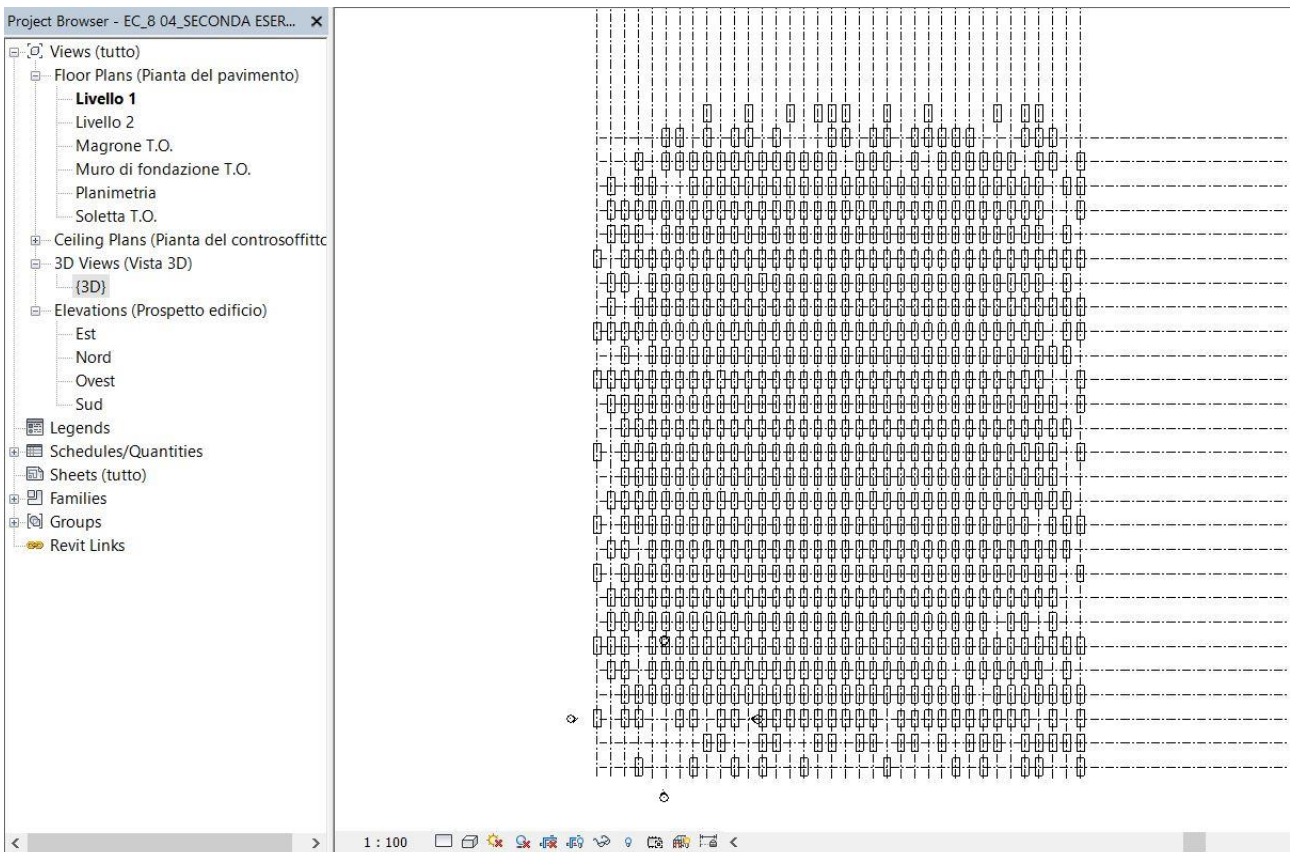


5 – Family Types: lets go create our different “stele” of the monument. I created 7 different types with same lenght and width but different thickness.

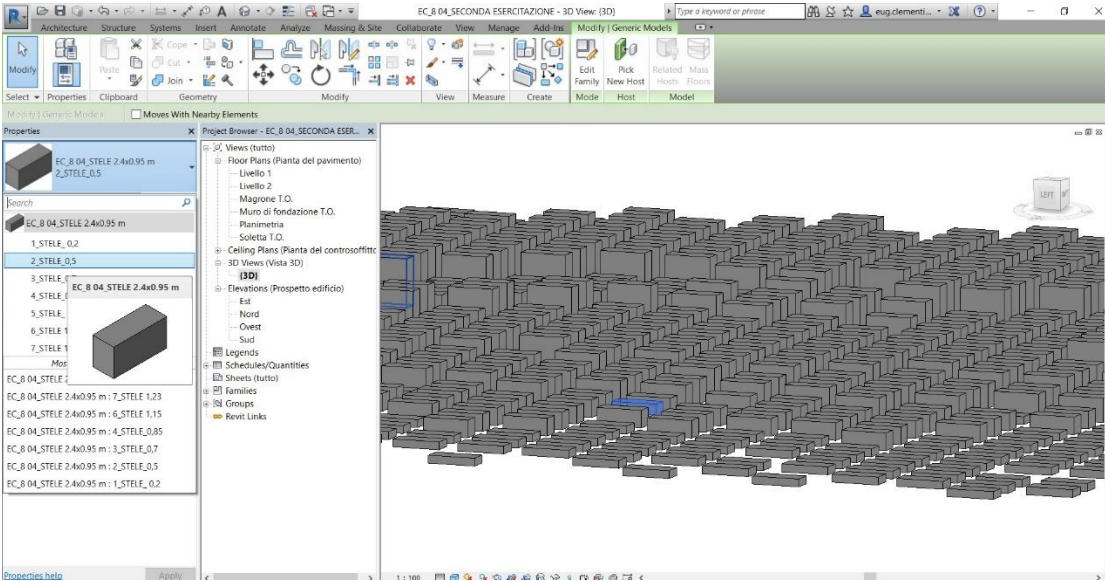


Now open a New Project

6 – Architecture_grid



- 7 – Load the Families in the Project.
 - Assign a basic parallelepipeds in every cross grid.



- 8 – select groups of parallelepipeds and assign one of the 7 types i created in Families.

