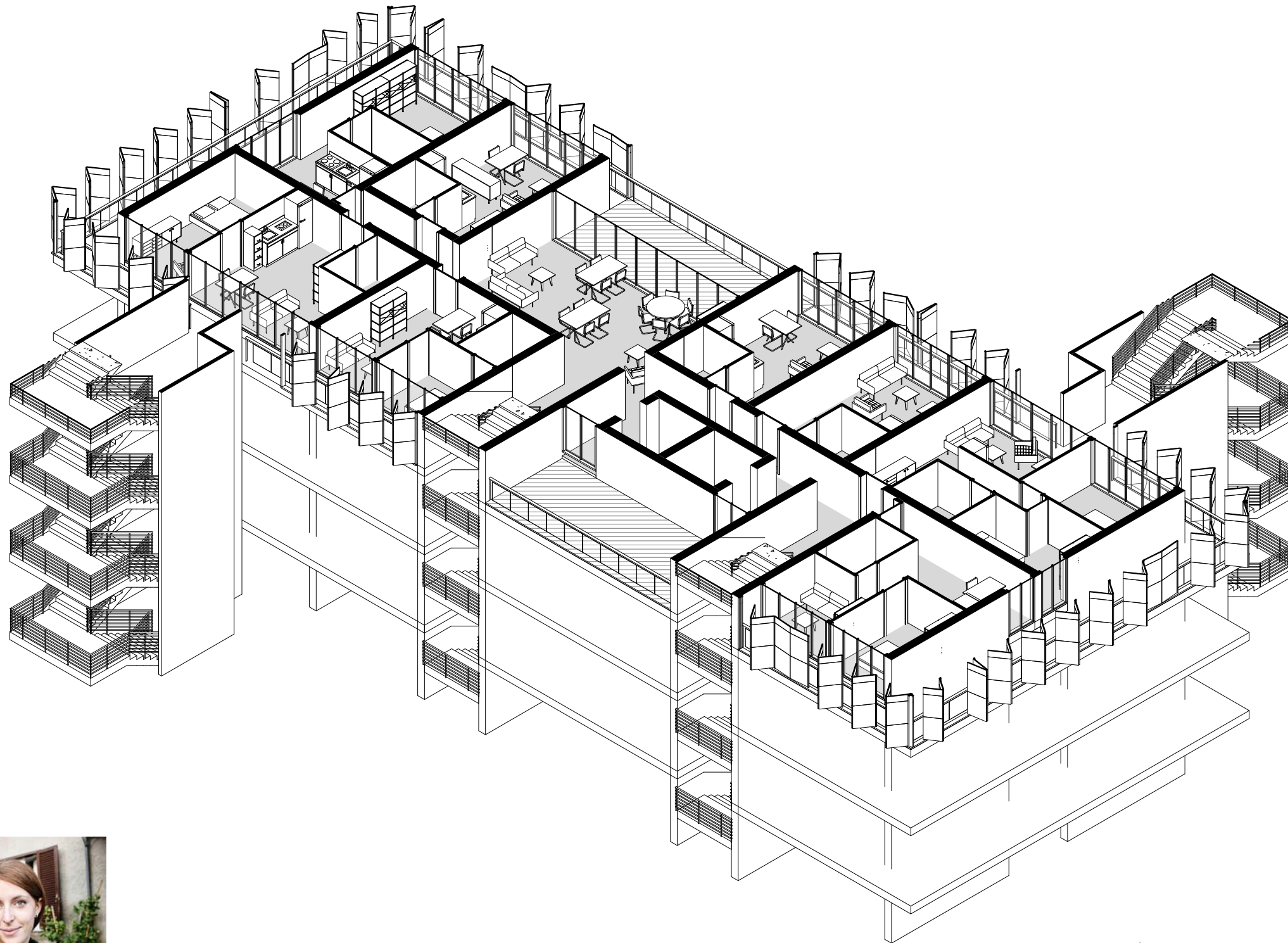




OCCUPY LIGINI'S TOWER

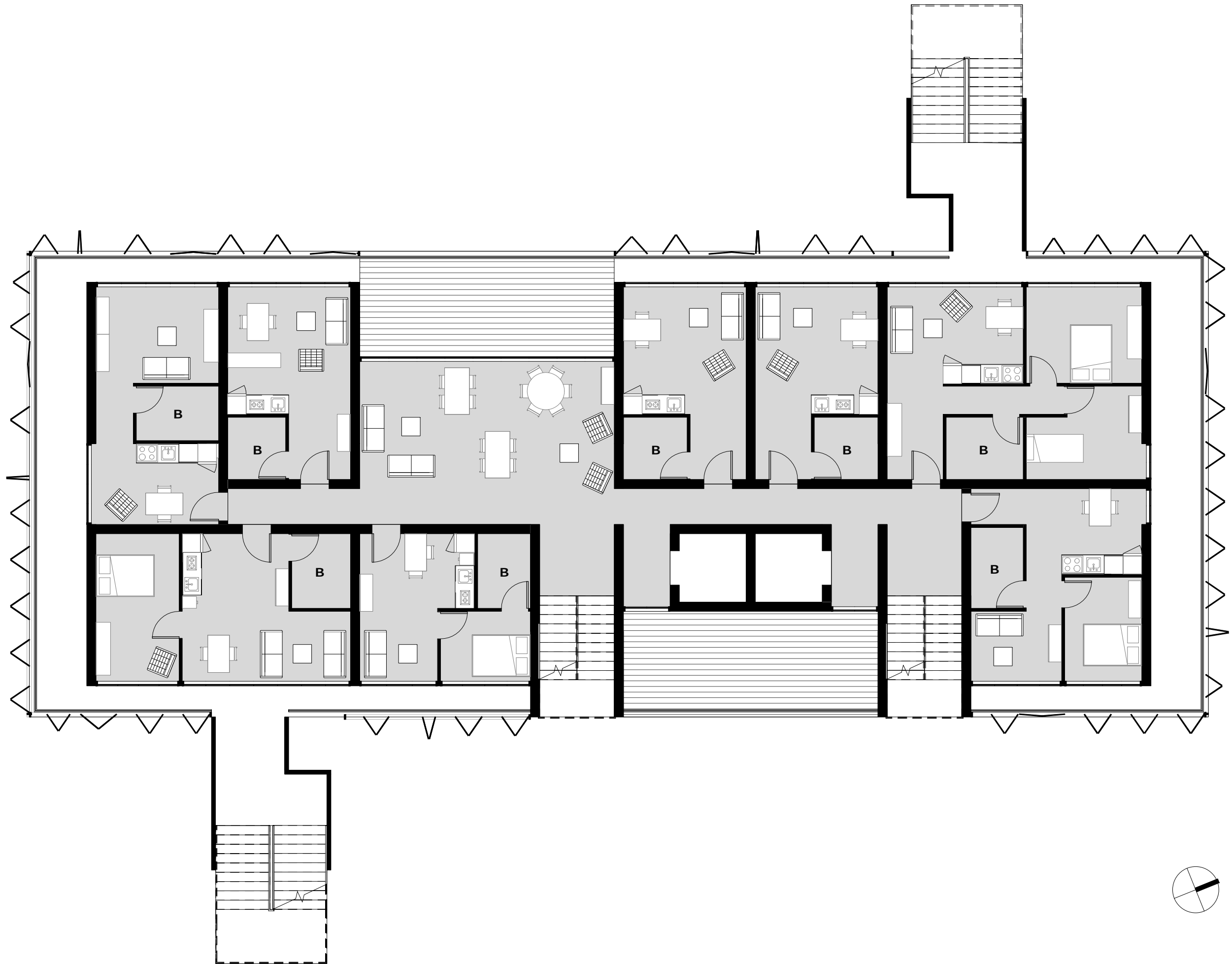
Tower A - Level 15

Level 15 of Tower "A" will host small flats for temporary users, such as out of office workers, divorced fathers or families in transit. There are 8 apartments, from 25 to 50 sqm. Half of them are studio apartments, the remaining four are composed by one or two bedrooms. The plan also contains a common area with a large terrace, compensating the lack of inner living space in the apartments. All around the perimeter we find small private loggias, which are also the emergency path to reach the fire escape stairs. This "strip" is enclosed in a continuous shading system, made up by folding rectangular panels. The design of the panels is related to the original appearance of the building. The facade of each level was divided into three strips, with an internal shading system of white curtains. I wanted to propose again this articulation through three micro-perforated metallic panels with different sizes of the holes.



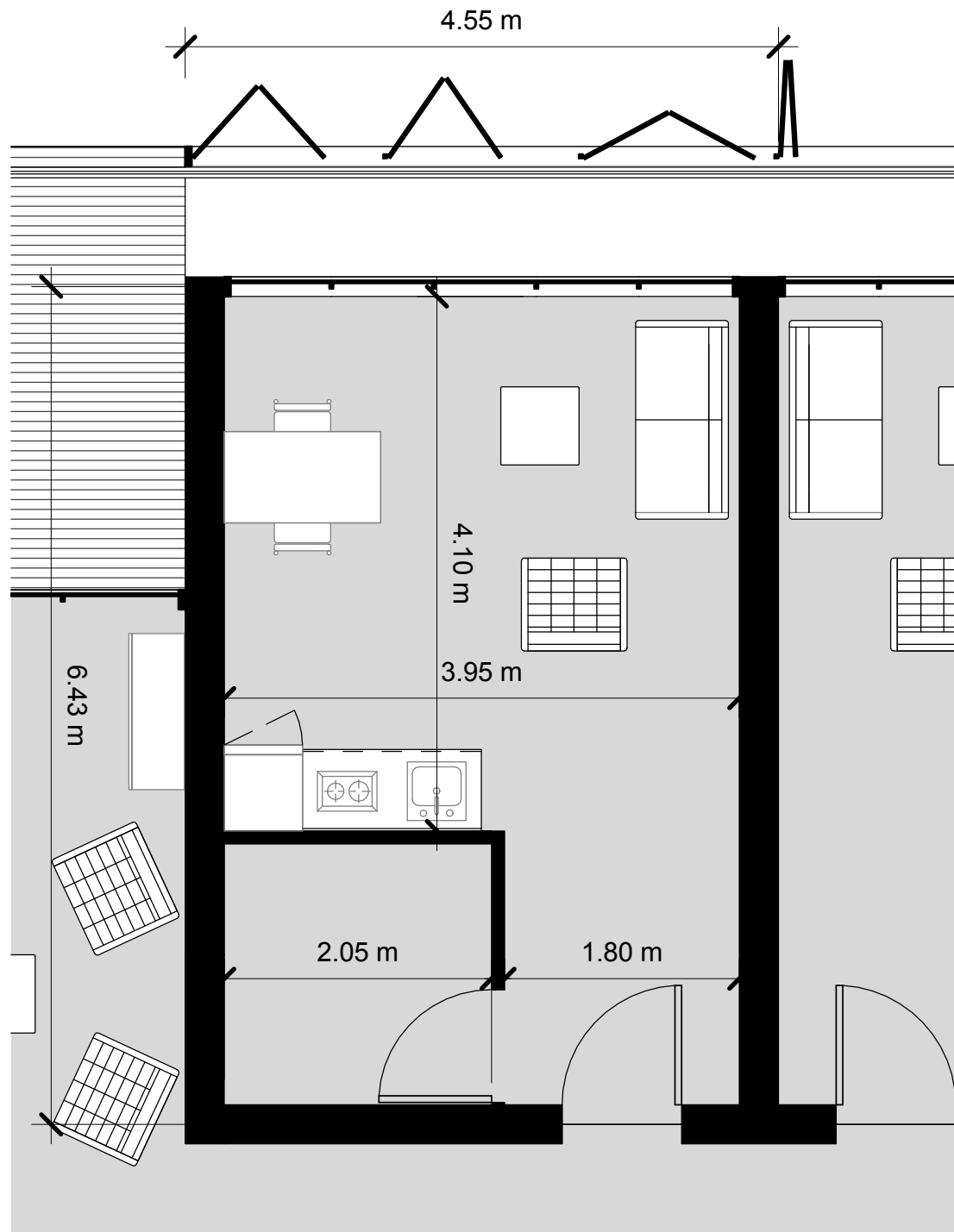
Sectioned axonometric view



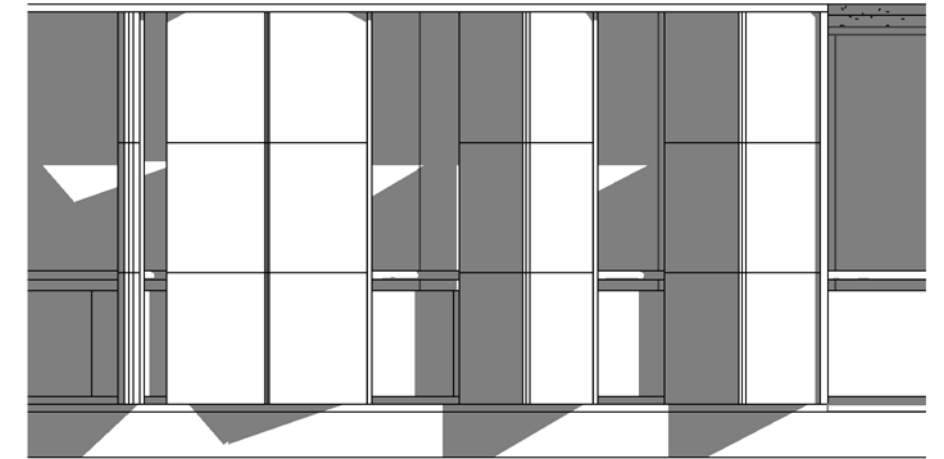




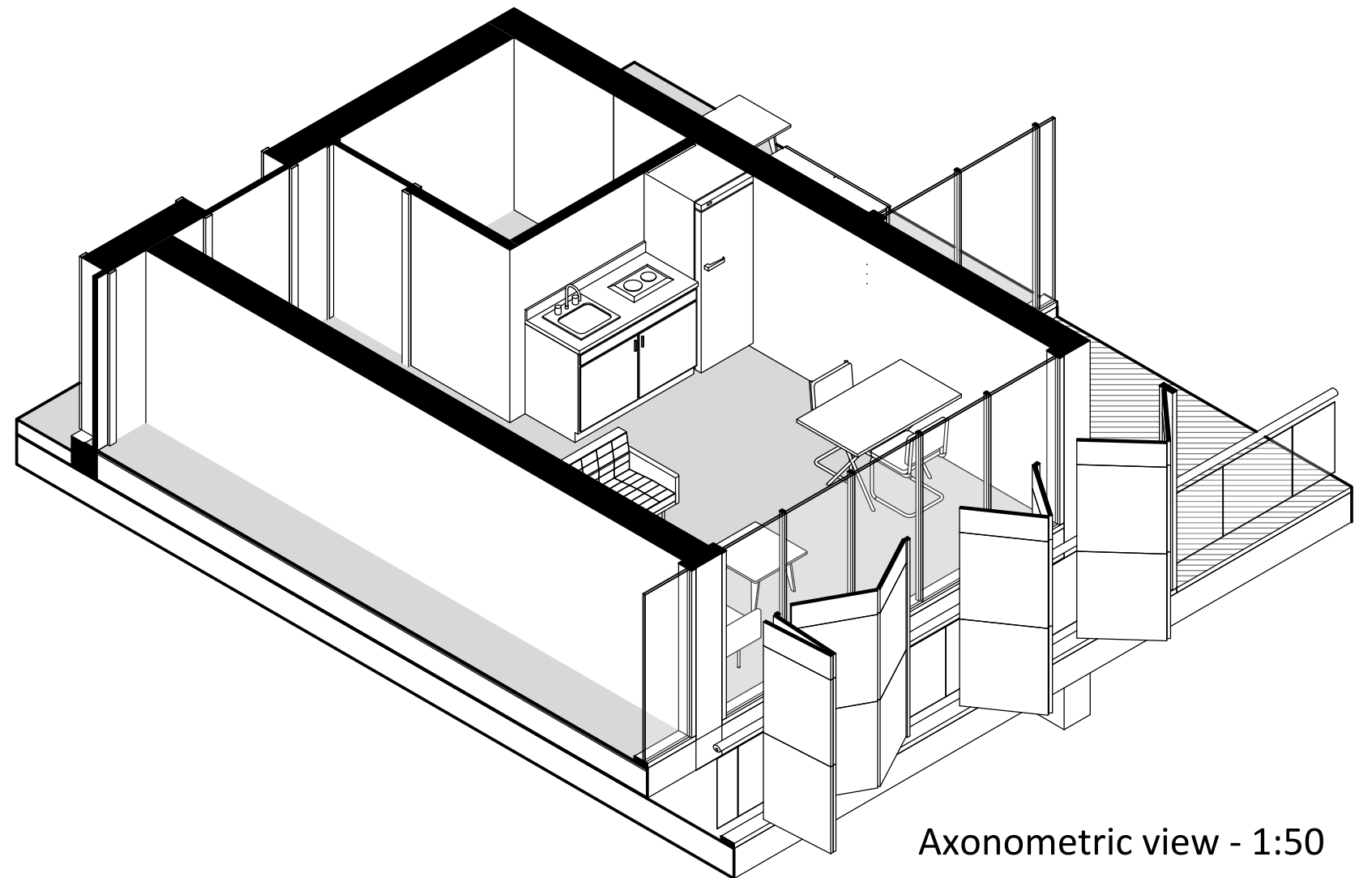
BASIC STUDIO APARTMENT DETAIL



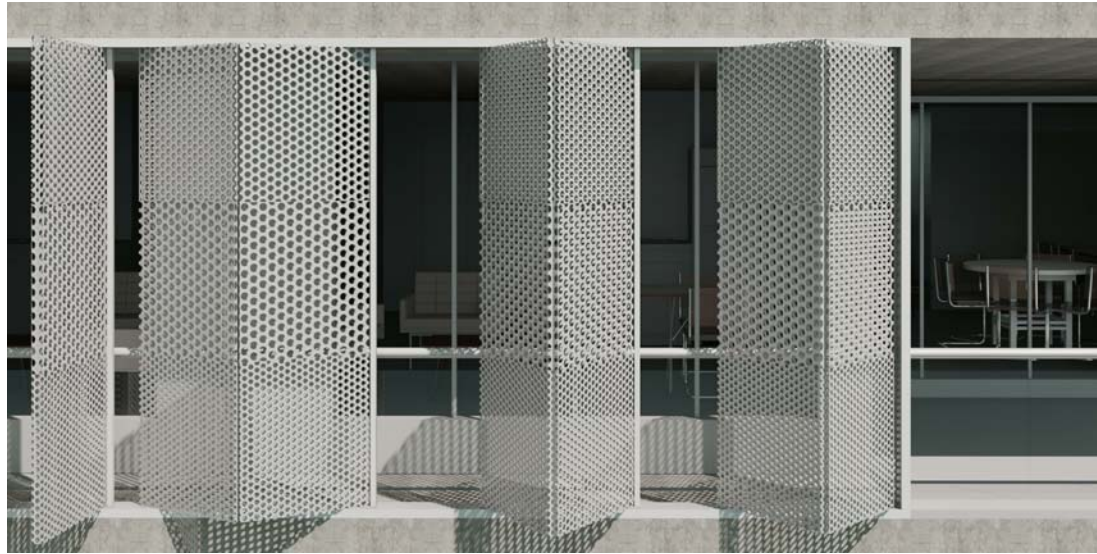
Plan view - 1:50



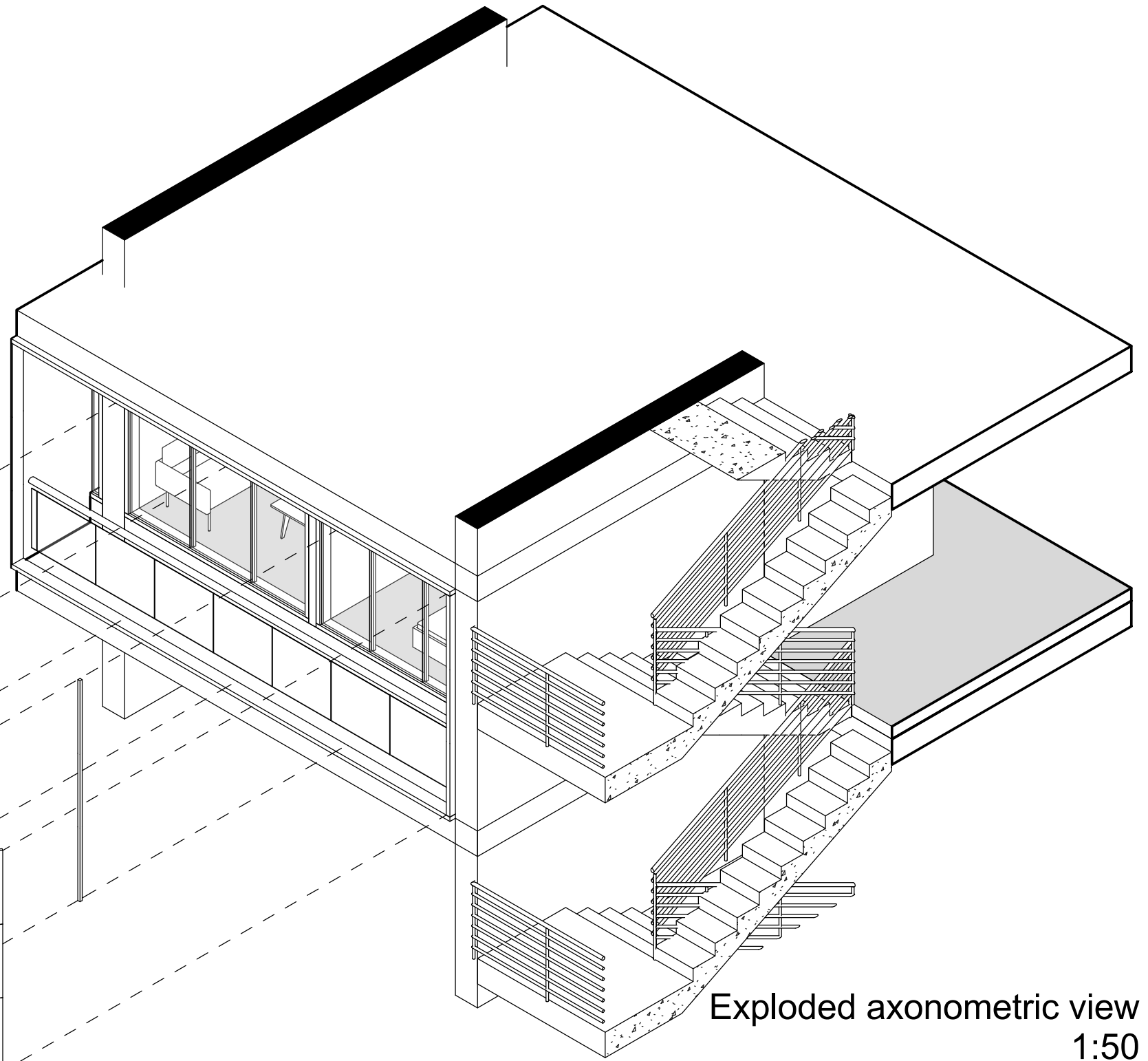
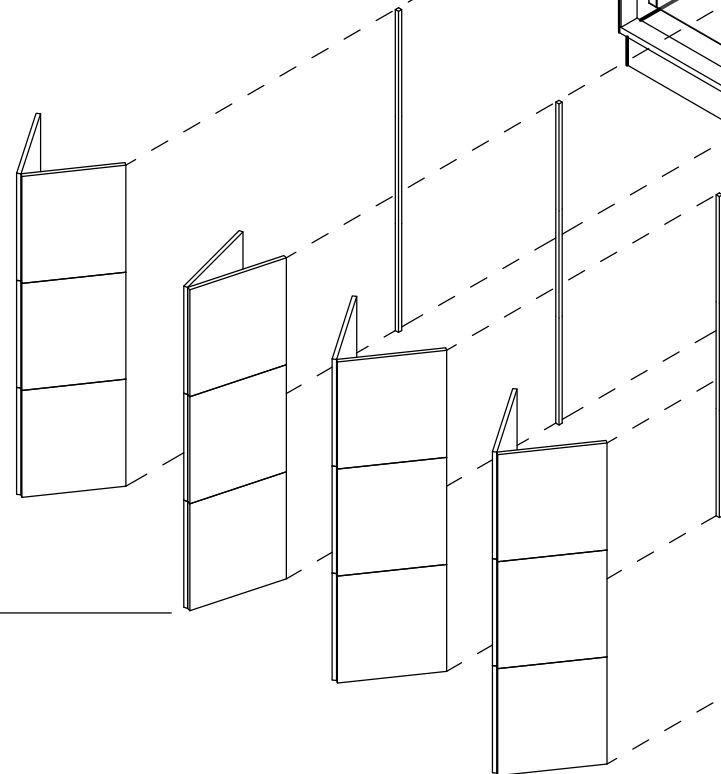
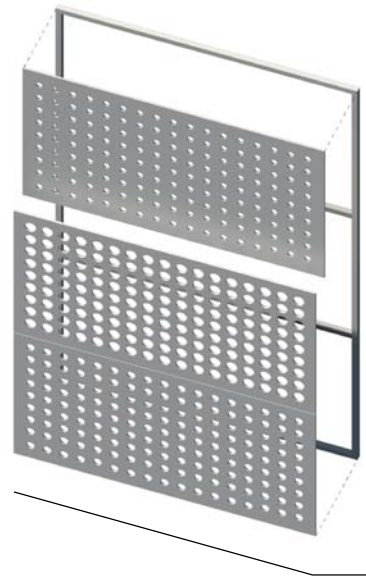
Facade detail - 1:50



Axonometric view - 1:50



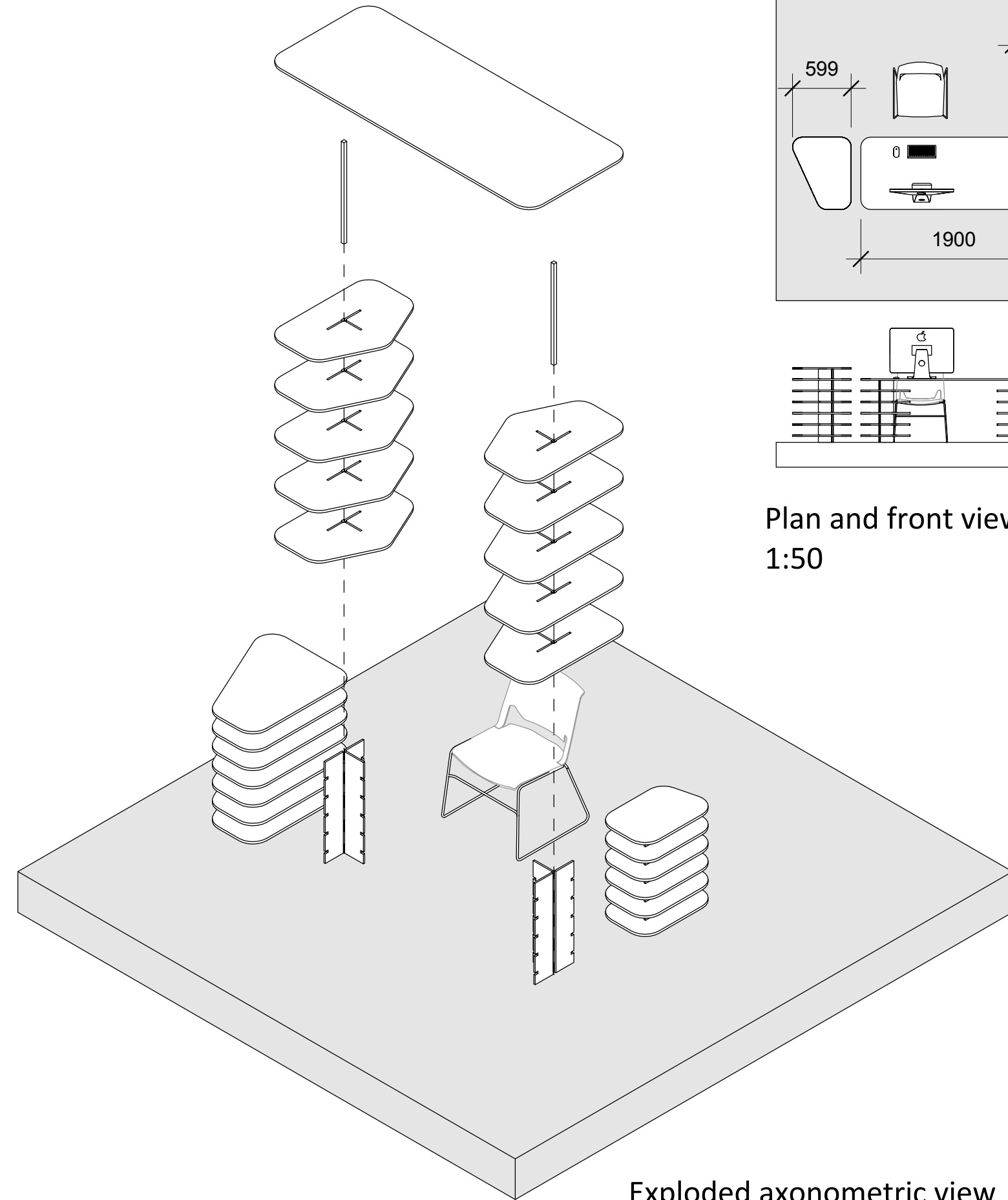
Facade rendered view



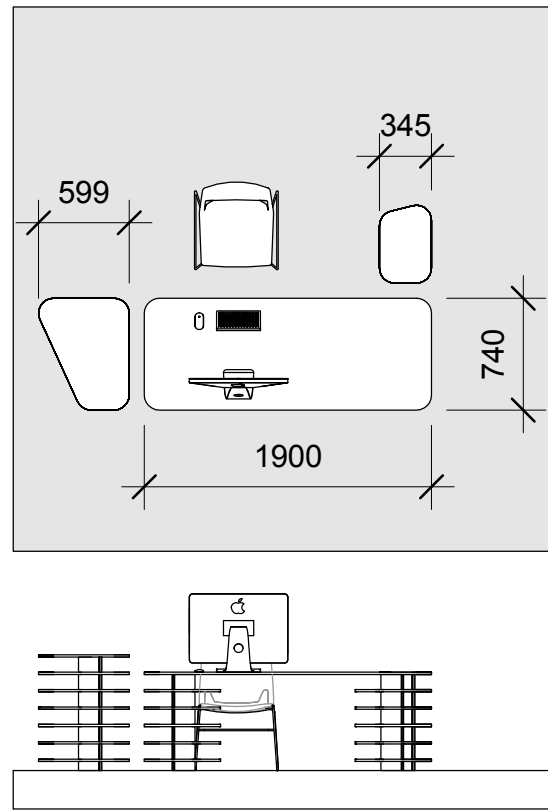
Exploded axonometric view
1:50



STRATES - OFFICE DESK

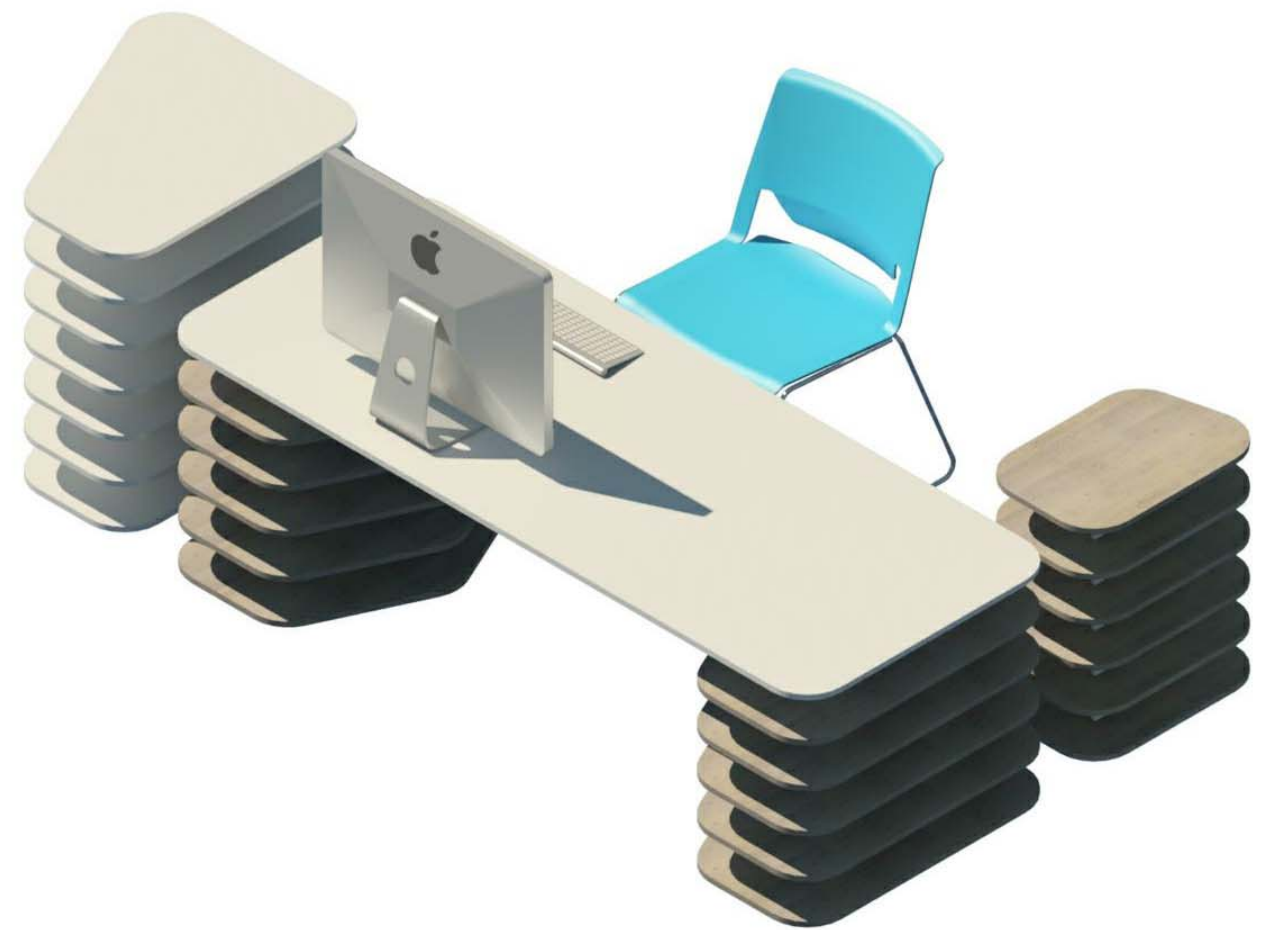


Exploded axonometric view
1:20



Plan and front view
1:50

Furniture Set			
Family	Type	Count	Cost
EA_Shelf_Desk_1ripiano	Oak	10	100.00
EA_Shelf_Desk_Famiglia nidificata	White	1	50.00
EA_Shelf_Desk_perno	White	2	10.00
EA_Strates Satellite_6	Oak	1	60.00
EA_Strates Satellite_7	White	1	70.00
EA_Strates_Piano_desk	190X74	1	30.00
Grand total: 16			320.00



Rendered view